

# 熱可塑系樹脂(エンブラ/スーパーエンブラ)への 密着に優れた

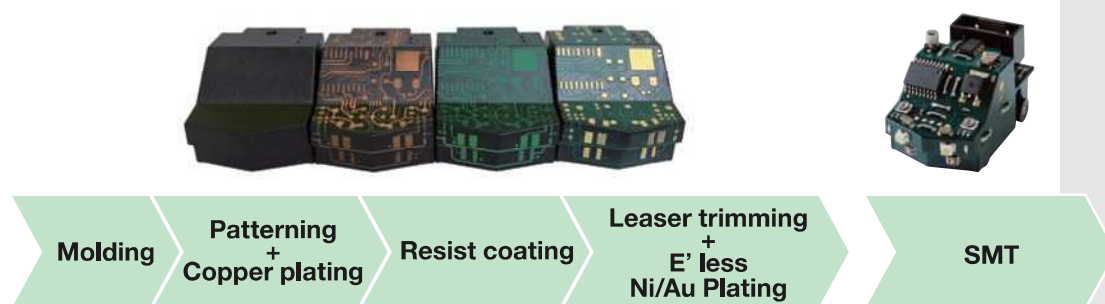
Excellent adhesion to thermoplastic resins  
(engineering plastics / super engineering plastics)

15

## 立体成型基板用ソルダーレジスト

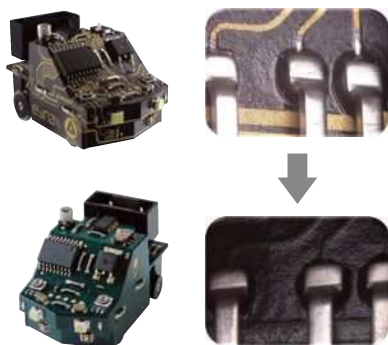
S-500MD Series Solder resist for MID

### 3D-MID 作製方法 Process flow of 3D-MID

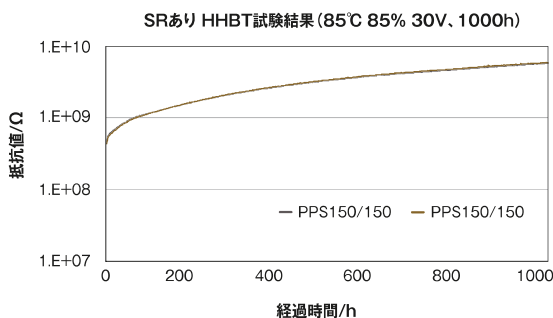


### ソルダーレジストの役割 Roles of Solder resist

- ① 実装時のはんだ流れ防止  
Prevention of solder outflow



- ② 高絶縁信頼性  
High insulation reliability



### 製品ラインナップ S-500 MD Series

150°C	LCP・PPS・PEEK	LCP用 [S-500 MD300] PPS・PEEK用 [S-500 MD300]
	PBT・PA4T PA6/6T・PA6T/X PA10/T・PA1010	PA, PBT用 [S-50 MD200]
90°C	PC・PPE・ABS PC/ABS	ABS/PC用 [S-500 MD100]